

Sandpiper

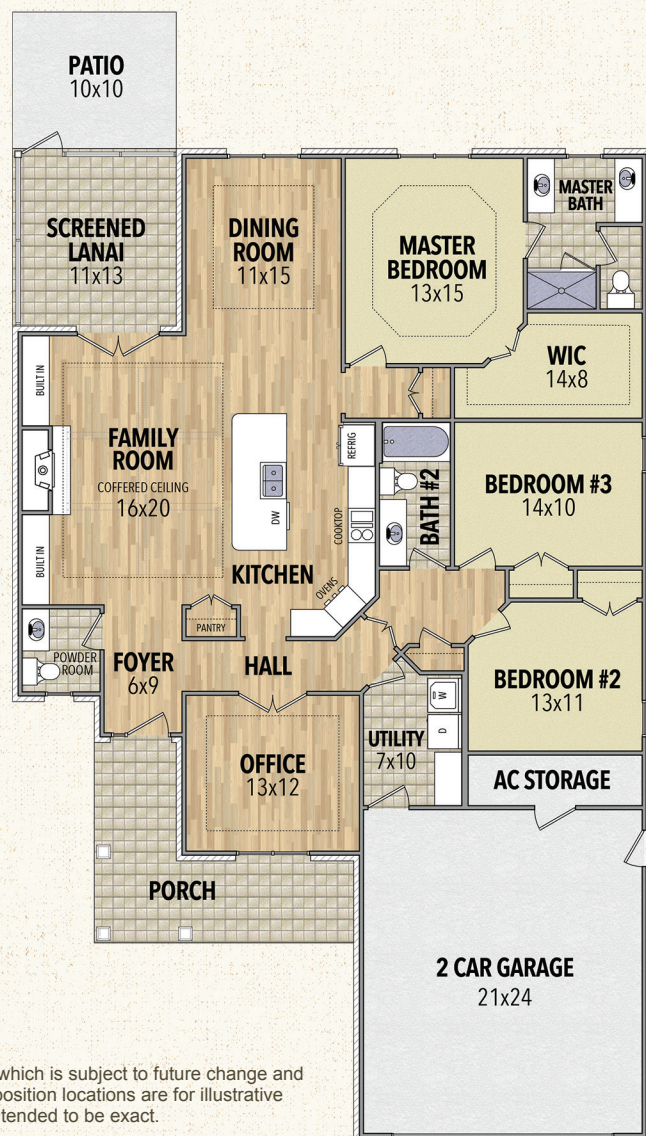


2,100 Heated Sq. Ft.



FEATURES

- 3 Bedrooms
- 2.5 Baths
- 2 Car Garage
- Tray Ceiling
- Screened Lanai
- Patio
- Fireplace
- Climate-Controlled Storage
- Office



This floor plan illustrates a general plan which is subject to future change and revisions. Dimensions, boundaries and position locations are for illustrative purposes only and are not necessarily intended to be exact.

VILLA